

Gold Operator Manual



**Call ProMow for ALL Service Needs
Toll Free: 1-877-477-6669**



Dear Valued Customer....

Let me take this opportunity to congratulate you on your purchase of a ProMow Reel Mower System. You have purchased perhaps the most revolutionary new product since the Weed eater! No other product exists that will allow you to mow your yard in 1/3 of the time and give you professionally manicured results all for a fraction of the cost of any alternative.

When used as directed, your ProMow unit will leave your yard looking healthy and lush. After all, the most qualified greens keepers in the world use ganged reel mowers to manicure their golf courses to "green carpet" perfection!

I recommend that you spend a few minutes and read the mowing tips and the troubleshooting guide found in the following pages. I believe these tips will make your ProMow experience much more satisfying and give you optimum performance with your new ProMow unit.

Also, please take a minute and complete the warranty page found in your packet. You may also complete the registration of your mower online, just link to our web site: <http://warranty.promow.com> We will need this information should you ever need warranty service and to notify you of changes, upgrades, or possible recall conditions. This information will not be sold or used by anyone other than ProMow, Inc.

Once again, we appreciate your business and hope you experience all the benefits a ProMow mower can bring to you.

Sincerely,

A handwritten signature in black ink, appearing to read "Douglas J. Short", written over a horizontal line.

Douglas J. Short
CEO
ProMow, Inc.

Gold 7 Pictured

Front Wing (Long)

Rear Wing (Short)

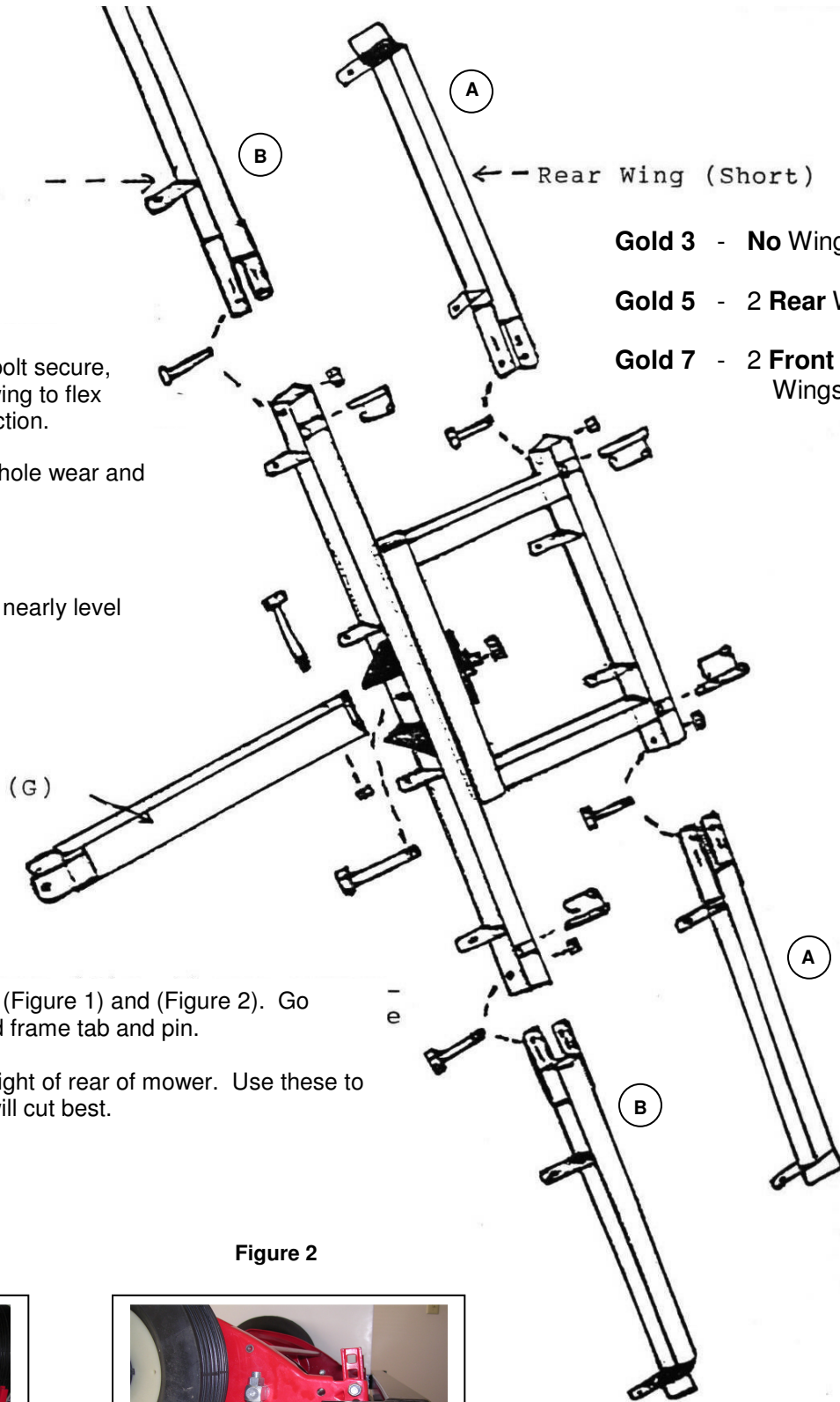
- Gold 3** - No Wings Used
- Gold 5** - 2 Rear Wings Used
- Gold 7** - 2 Front and 2 Rear Wings Used

Attach wing to frame, tighten bolt secure, snug as possible that allows wing to flex with weight or reel. Oil connection.

Keep wing bolts tight to avoid hole wear and mower tracking true.

(G) Attach to Power Unit.

Tongue top surface should be nearly level when attached to power unit.



Attach reel to frame as shown (Figure 1) and (Figure 2). Go through top hole of mower and frame tab and pin.

Roller brackets will change height of rear of mower. Use these to level mower. A level mower will cut best.

Figure 1

Figure 2



MAINTENANCE & ADJUSTMENT

Cutting Height Adjustment

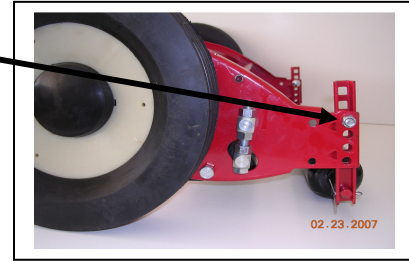
Cutting height is determined by the axle bolt setting as shown in Figure 1. To change height setting, you will need 2 - 9/16" wrench's. Remove the black hub cap on the outer side of the wheel. Use 1 - 9/16" wrench on the axle, the other one on the nut as shown in Figure 1. Loosen the nut until about 1/2 of the threads of the nut are still on the bolt. Next, the washer needs to pop out of the hole to allow the axle bolt to move to the desired setting. Washer needs to fit into the hole and bolt needs to be tightened. Use a wrench on the outer side and on the nut and tighten securely. Do not over tighten as this could damage the axle. For an even cut, all wheel axles need to be at the same setting. **Raising axle lowers** cutting height, **lower axle raises** cutting height. **Always re-check axle bolt nut for tightness after height settings have been changed. Do not operate mower with loose bolts**

Figure 1



AXLE BOLT

Figure 2



ROLLER BRACKET
ADJUSTING NUT

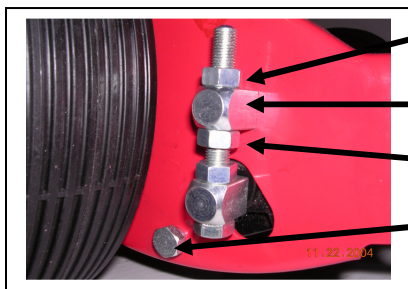
Roller brackets, Figure 2, are intended to level mower. Small height changes can be obtained by moving the bracket up or down. Be sure all mowers are set at the same position to obtain a level cut. For best cutting results use this adjustment to level the cutter bar.

Height Settings

Bottom hole	2 3/4"
Middle hole	1 1/2"
Top hole	5/8"

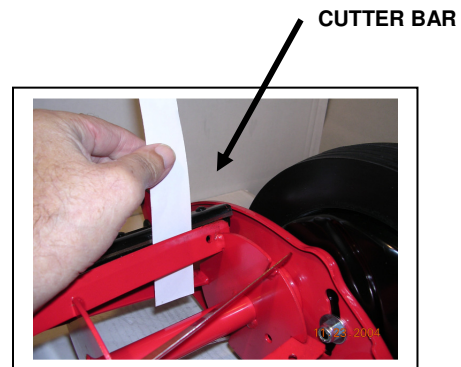
All heights measured on flat surface.
Actual cut may vary from chart.
For high cut, locate axle bolt in bottom hole.
Adjust roller bracket, Figure 2, to level cutter bar for the best quality cut.

Reel Adjustment



UPPER NUT
UPPER TRUNNION
LOWER NUT
CUTTER BAR NUT

To tighten cutter bar, simply loosen upper nut slightly and tighten lower nut. To loosen cutter bar loosen lower nut slightly and tighten upper nut. Use same procedure on both sides of reel. **DO NOT OVERTIGHTEN – DAMAGE COULD RESULT!**



CUTTER BAR

When properly adjusted, you will hear a whispering sound and should cut paper across entire cutter bar.

SHARPENING YOUR REELS

Sharpening can be done by the owner with a ProMow Sharpening Kit.

For Technical Service call: 1-877-477-6669

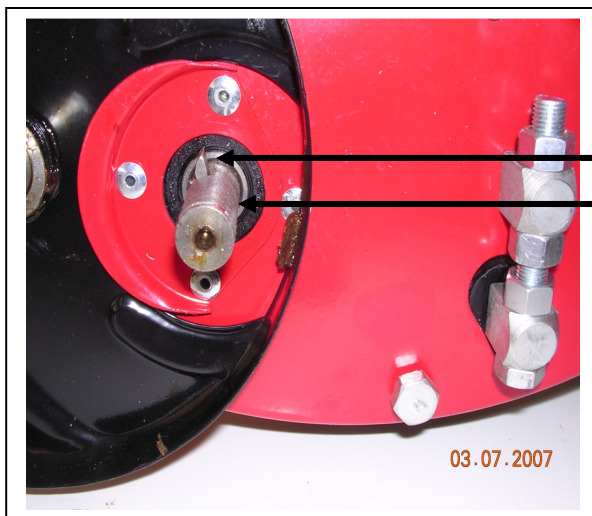
PINION GEAR AND PAWL INSTALLATION

It is important to follow these installation instructions when installing a pawl or pinion gear, as the reel will not function properly unless it is installed in this manner.

Note the reel shaft and pawl (A), the pinion gear fits on this shaft. Note the shaft is positioned for the pawl to be in a 12:00 position. Note the pawl, the flat side of the upper tip faces toward the rear of the mower.

Note the pinion gear (B) design internally. Note the flat side on the inside of the gear. The flat side needs to face forward **to enable the flat side of the pawl to meet the flat side of the gear.** The flat side of the gear and pawl, need to meet to drive the reel. **This allows the reel to drive going forward and to stop when going in reverse.** Both wheels drive the reel, both pinion gears and pawls need to be assembled in the same manner to function properly. Test each wheel **by turning the wheel forward.** **Each wheel will turn the reel blades if installed properly.**

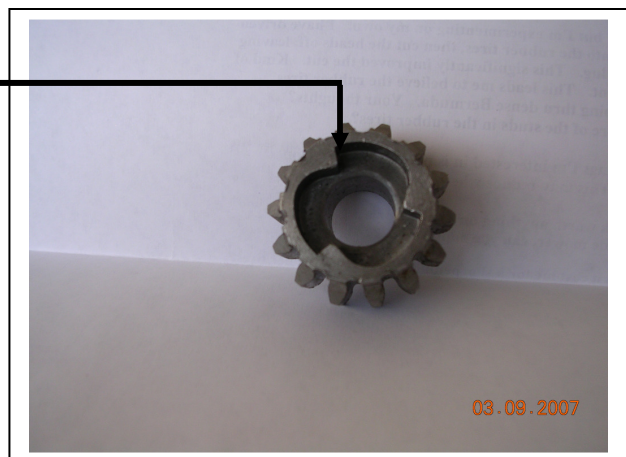
A

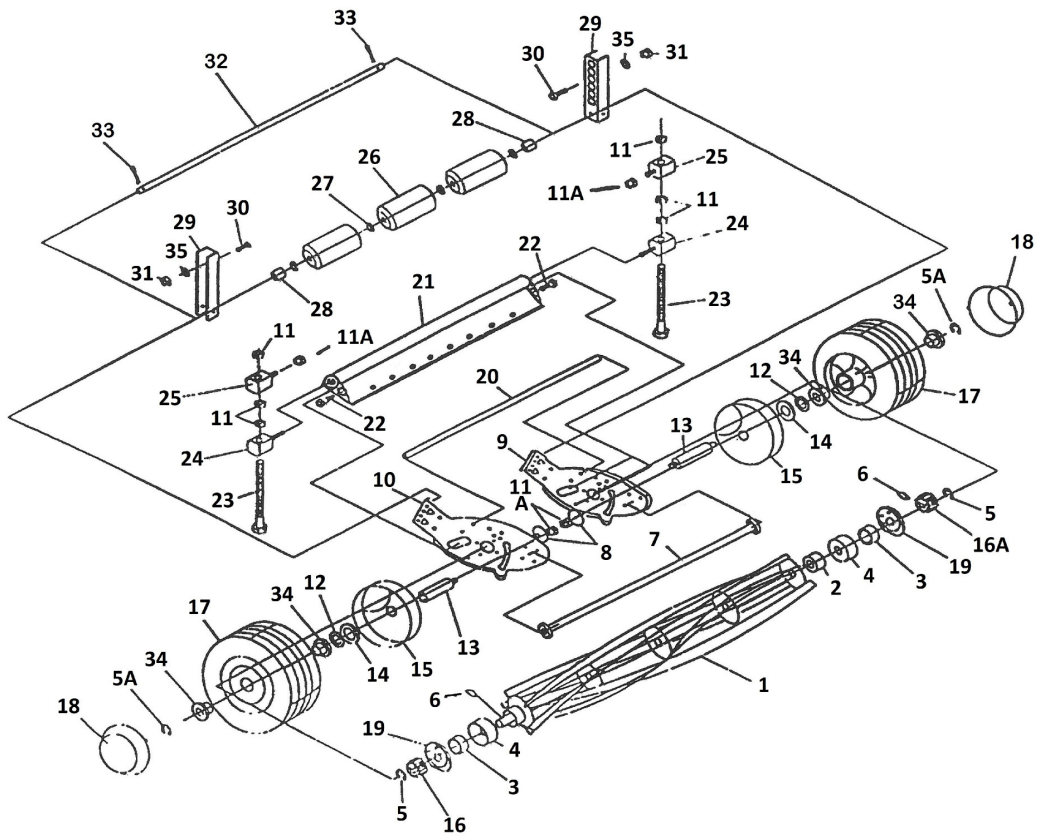


PAWL FLAT SIDE
REEL SHAFT

B

FLAT SIDE
PINION GEAR





GOLD A 21" REEL PARTS LISTING

REF NO	PART NO	DESCRIPTION	QTY	REF NO	PART NO	DESCRIPTION	QTY
1	6250-201901	21" Reel Assembly	1	17	6137-201901	Wheel Assembly 21"	2
2	6150-201901	Dust Cover	2	18	6017-201901	Hub Cap	2
3	6155-201901	Reel Bearing	2	19	6043-201901	Bearing Retainer	2
4	6078-201901	Shaft Trap	2	20	6239-201902	Rear Spacer	1
5	6131-201901	Pinion Retaining Ring	2	21	6250-201902	Cutter Bar Assembly(Bed Knife)	1
5a	6CB-13	Axle Retaining Ring	2	22	6214-201901R	Front Screw(Taper Bolt)RH	1
6	6115-201901	Pawl	2	23	6191-201901	Cutter Bar Adj. Bolt	2
7	6239-201901	Torsion Tube	1	24	6214-201902	Trunion Lower	2
8	6014-201901	Step busing	2	25	6214-201903	Trunion Upper	2
9	6004201901	Side Plate RH	1	26	6137-201902	Roller	3
10	6004-201902	Side Plate LH	1	27	6014-201903	Washer	4
11	6236-201901	Nut	6	28	6124-201901	Roller Axle Spacer	2
11A	6236-201901	Nut	4	29	6021-201001	Roller Bracket	2
12	6014-201901	Washer	2	30	6000CB-M8-35	Carriage Bolt	2
13	6111-201901	Axle	2	31	6NY-3/8	Nut	2
14	6017-201902	Washer	2	32	6111-201902	Roller Shaft	1
15	6017-201250/251	Gear Housing (L&R)	2	33	6115-201902	Cotter Pin	2
16	6073-201901L	Pinion Gear LH	1	34	6124-201902	Wheel Bushing	4
16A	6073-201901R	Pinion Gear RH	1	35	6FW-M8	Washer	2

**OIL REELS AFTER EACH USE TO PREVENT RUST AND TO LUBRICATE
CUTTING BLADES. USE LIGHT OIL, SUCH AS WD-40**

MAINTENANCE AND WARRANTY INFORMATION

- **Maximum** speed in smooth conditions should not exceed a brisk walk or 4 miles per hour. In rough conditions slow down more. Bouncing reels will not give the desired cut.
- Loss of parts due to loose bolts is not covered by warranty.
- Check all bolts for tightness regularly, especially the axle and roller bracket bolts
- Wing bolts need to be kept tight to prevent hole wear. Wings need to be able to flex with the terrain. Oil pivot points of wings.
- Lubricate reels regularly with light oil such as WD-40 after each use to prevent any rust from forming on cutting surfaces.
- **For problems or questions call ProMow toll-free: 1-877-477-6669.**
- **Refer to owner's manual for more information on warranty and maintenance.**

PROMOW MOWING TIPS

- **THIS IS A FINISH CUT MOWER ONLY.** IT IS NOT INTENDED TO CUT WEEDS OR VERY TALL GRASS.
- FOR BEST RESULTS WHEN MOWING, DO NOT CUT OFF MORE THAN 1"-2" OF GRASS DURING EACH MOWING.
- IF YOU ALLOW YOUR GRASS TO GROW TO A TALLER LENGTH, MOWING TWICE WILL RESULT IN THE SMOOTHEST CUT.
- EACH TIME YOU MOW, MOW AT A DIFFERENT ANGLE. CROSS MOWING WILL RESULT IN THE SMOOTHEST CUT.
- CHECK CUTTER BARS EVERY 2-3 MOWINGS. TO KNOW THE BARS ARE ADJUSTED, REELS WILL JUST TOUCH THE CUTTER BAR MAKING A LIGHT WHISPING NOISE AND SHOULD CUT PAPER ACROSS THE ENTIRE CUTTER BAR. TO ADJUST CUTTER BARS REFER TO "MAINTENANCE AND ADJUSTMENT" PAGE.
- IF YOU NOTICE WHEEL MARKS FROM TRACTOR, YOU ARE WAITING TOO LONG BETWEEN MOWINGS OR YOUR GRASS MAY BE TOO WET.
- TO HELP ON RUST & WEAR, SPRAY W-D 40, OR SIMILAR LUBRICANT ON THE CUTTER BAR AFTER EACH MOWING.
- ALWAYS STORE IN A DRY PLACE.
- AFTER CONSIDERABLE USE YOUR PROMOW UNIT MAY NEED TO BE SHARPENED. THIS CAN BE DONE AT HOME WITH A PROMOW SHARPENING KIT OR THROUGH YOUR LOCAL SHARPENING SHOP.

CUSTOMER RESPONSIBILITIES

- READ AND FAMILIARIZE YOURSELF WITH ALL INSTRUCTIONS AND USEAGE HINTS IN THIS MANUAL.
- INSPECT YOUR MOWING AREA FOR ANY DEBRIS OR OBJECTS THAT COULD CAUSE PROBLEMS AND REMOVE PRIOR TO MOWING.
- MAKE SURE YOUR MOWER IS IN SAFE OPERATING CONDITION. DO NOT ATTEMPT TO OPERATE IF YOU HAVE ANY DAMAGE' REPAIR IT FIRST.
- **TRAVEL AT A SAFE SPEED. EXCESSIVE SPEED IS UNSAFE AND MAY CAUSE DAMAGE TO THE UNIT.
- DO NOT MOW NEAR SMALL CHILDREN OR OTHER PEOPLE.
- PERIODICALLY CHECK YOUR UNIT FOR DAMAGE AND MAKE SURE ALL NUTS AND BOLTS ARE TIGHT.
- ALWAYS EXERCISE CARE WHEN OPERATING YOUR MOWER, AVOID STRIKING OR RUNNING INTO OR OVER SOLID OBJECTS OR DEBRIS.

CARE

- KEEP YOUR MOWER CLEAN AND REGULARLY LUBRICATE BLADES WITH WD-40 OR SIMILAR LUBRICANT. RECOMMENDED AFTER EACH MOWING.
- CHECK ALL BOLTS AND NUTS TO BE SURE THEY ARE PROPERLY SECURED.
- STORE IN A CLEAN DRY AREA.
- DO NOT TRAVEL WITH THE WINGS IN UPRIGHT POSITION. DAMAGE TO THE FRAME OR MOWER HEADS CAN RESULT.
- IF YOU HAVE ANY QUESTIONS OR PROBLEMS CALL PROMOW TOLL FREE: 1-877-477-6669.

WARRANTY

SEE "WARRANTY REGISTRATION - NEW EQUIPMENT LIMITED WARRANTY" IN THIS MANUAL. WARRANTY WILL NOT BE EFFECTIVE UNLESS REGISTERED BY COMPLETING FORM AND MAILING TO PROMOW.

****CAUTION: A brisk walk, about 4 MPH, should be considered top speed. Reduce speed down from 4 MPH on rough terrain. Speeds that exceed 4 MPH on smooth turf will cause premature wearing of the bearings and possible damage to the reel itself.**

EVIDENCE OF EXCESSIVE SPEED WILL VOID WARRANTY

Problem or Questions? Call ProMow Toll-Free: 1-877-477-6669