

Premium Sport Series Owner's Manual





Dear Valued Customer....

Let me take this opportunity to congratulate you on your purchase of a ProMow Reel Mower System. You have purchased perhaps the most revolutionary new product since the Weed eater! No other product exists that will allow you to mow your yard in 1/3 of the time and give you professionally manicured results all for a fraction of the cost of any alternative.

When used as directed, your ProMow unit will leave your yard looking healthy and lush. After all, the most qualified greens keepers in the world use ganged reel mowers to manicure their golf courses to "green carpet" perfection!

I recommend that you spend a few minutes and read the mowing tips and the troubleshooting guide found in the following pages. I believe these tips will make your ProMow experience much more satisfying and give you optimum performance with your new ProMow unit.

Also, please take a minute and complete the warranty page found in your packet. You may also complete the registration of your mower online, just link to our web site: warranty.promow.com. We will need this information should you ever need warranty service and to notify you of changes, upgrades, or possible recall conditions. This information will not be sold or used by anyone other than ProMow, Inc.

Once again, we appreciate your business and hope you experience all the benefits a ProMow mower can bring to you.

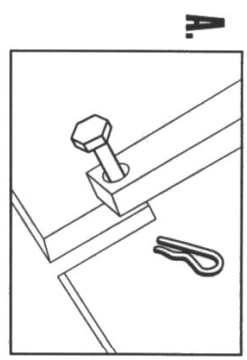
Sincerely,

A handwritten signature in black ink, appearing to read "Douglas J. Short".

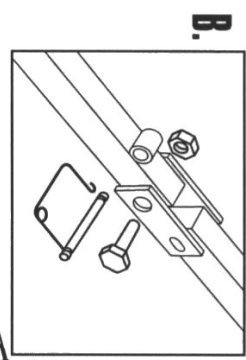
Douglas J. Short
CEO
ProMow, Inc.

Sport 7 Pictured

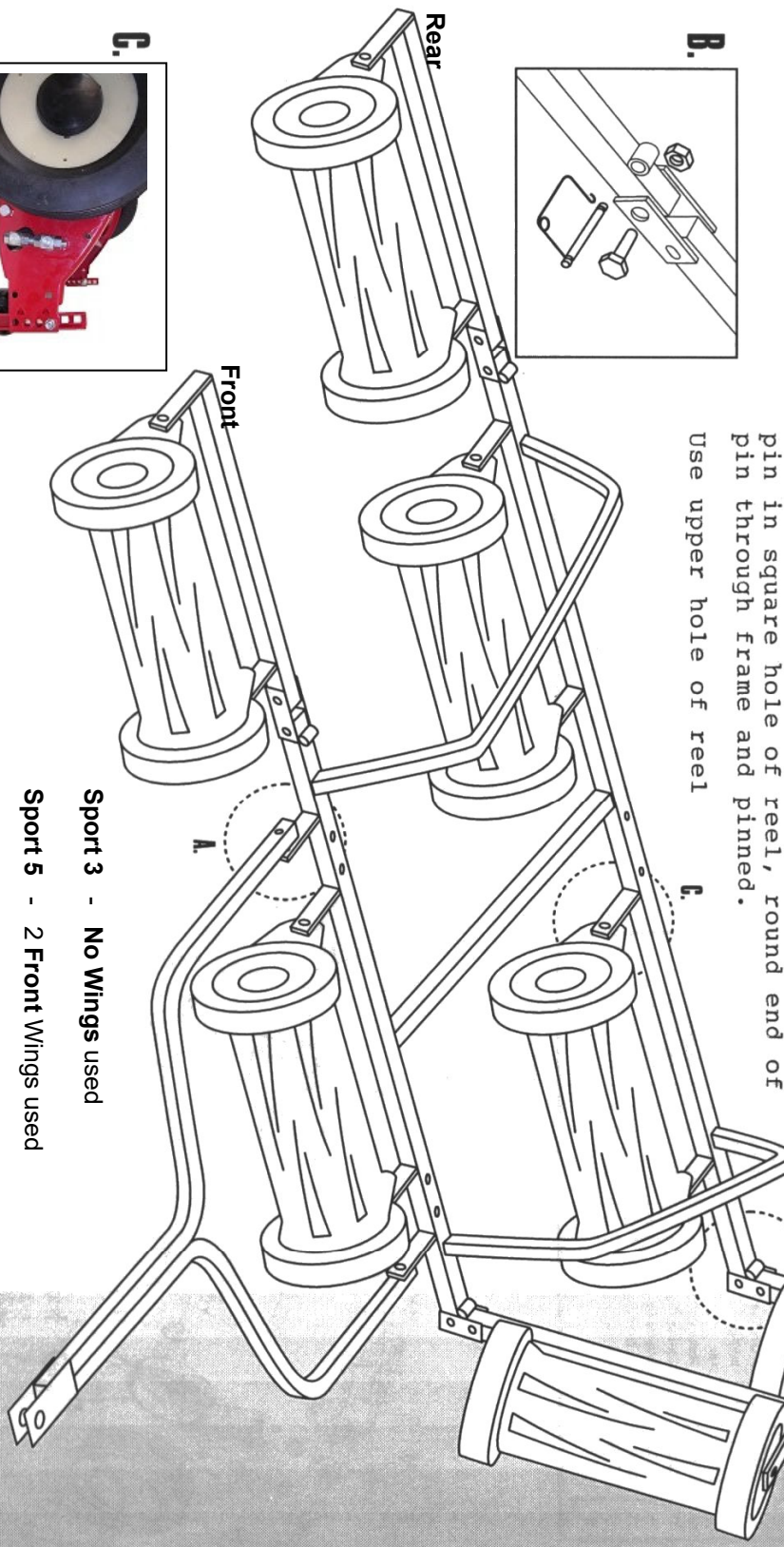
Assembly Drawing



A Attach hitch as shown fig A



B Bolt through wing tab and frame as shown. Tighten bolt snug, but allow wing to flex with weight of reel. Oil pivot point



C Pin reel to frame as shown, square end of pin in square hole of reel, round end of pin through frame and pinned. Use upper hole of reel



C

Sport 3 - No Wings used

Sport 5 - 2 Front Wings used

Sport 7 - 2 Front and 2 Rear Wings used

Cutter Bar Adjustment

The cutter bar on your mower was professionally adjusted before it left our shop. Many years of experience tell us that light contact provides a superior cut and the mower can go longer without needing to be sharpened when set this way.

Some customers have reported that their mower was a little difficult to push the first time they used it but that it quickly became easier. Spraying the reel blades with WD40 or another lubricant will reduce the friction between the blades, making the mower easier to push and minimizing wear of the blades.

After considerable use or sharpening, the cutter bar may need adjustment. This requires a 9/16" wrench.

Make certain that the bolts which are threaded into the cutter bar are tight, to eliminate any play or looseness, before beginning adjustment of the cutter bar (fig.6) The short cutter bar bolt (A) must be turned counter clockwise to tighten on the side shown in figure 6. The cutter bar bolt on the opposite side has a regular thread.

To adjust the cutter bar push the handle of the mower forward and let it rest on the ground. The roller will be off the ground (fig.7)

Using a 9/16" wrench, turn the adjustment nut approx. 1/8 turn clockwise to increase the contact between the reel bedknife (fig.6). Turn the adjustment nut counterclockwise 1/8" turn to decrease the contact between the reel and bedknife. Adjust each side equally until there is minimal contact.

It is important that the cutter bar be set so that the contact is even across the cutter bar, from one side of the mower to the other. You can test this by slowly turning the reel and listening to the sound of the reel blades as they contact the cutter bar, or you can use the paper test described on this page (fig 7)

Insert a strip of quality 0.003" paper such as writing paper or a magazine page, approximately 2" wide and 6" long, between the cutter bar and the reel blades (fig.7). Turn the reel slowly and carefully, inserting the paper at intervals across the reel. The reel will turn easily and will cut the paper all the way across the cutter bar.

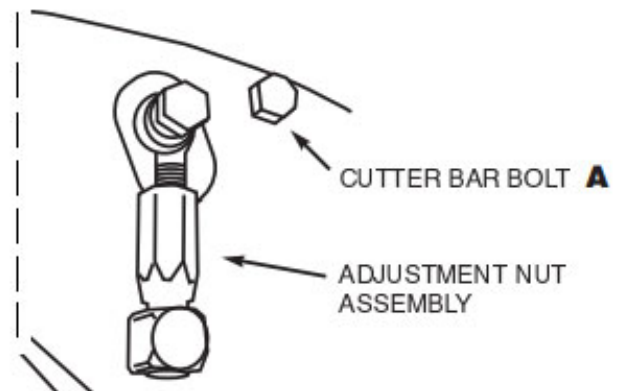


Figure 6

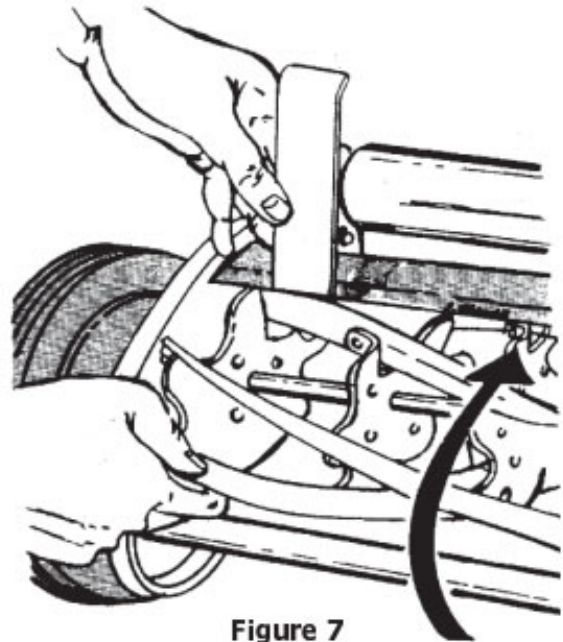


Figure 7



NOTE

Keeping the bed-knife adjusted so that the blades contact slightly, will extend the sharpness of the mower. This is very easy to do and should be done on a regular basis.

Choosing the Cutting Height

Choosing the best cutting height is one of the most important decisions you will make for the health and beauty of your lawn. The best sources of information about lawn care are universities, seed and sod producers, departments of agriculture and the volunteers with the nationwide Master Gardener program. Climate and soil can affect this decision, so the best information comes from a regional source such as the local Master Gardeners. When you locate a credible source of information you will find that they usually give a range of recommended mowing heights, such as "1.5 to 3 inches". Choosing a height at the higher end of that range has many benefits. The blades of grass act as solar collectors; they feed the plant, so taller grass is providing more energy for the lawn and encourages deeper root systems. Deeper roots mean the lawn will be more drought tolerant because during dry spells, it is the surface that dries out fastest, so the deeper soil contains more water.

Taller grass tends to invite fewer weeds. Some

weed seeds must have direct sunlight to sprout, so the shading effect of the taller grass can prevent these weeds from even getting started. Others will simply be crowded out by the tall grass.

Another benefit is the frequency of mowing required. It is best to mow often enough that you are not cutting off more than one third of the length of the blade in any mowing. If you mow to a finished height of 1.5" then you must mow every time the grass grows a half inch. If you mow to a finished height of 3" then you only have to mow every time the grass grows an inch.

Weeds tend to grow faster than grass, so mowing more often will help to prevent those towering weeds that don't get caught between the reel blades and the cutter bar, and therefore do not get cut. Your taller grass will be greener, healthier, need less water, have fewer weeds and will filter out more pollutants and produce more oxygen than a lawn that is mowed too severely. © Marjorie King, 2009

Cutting Height Adjustment

Refer to Height Adjustment sheet included in your manual.

Maintenance

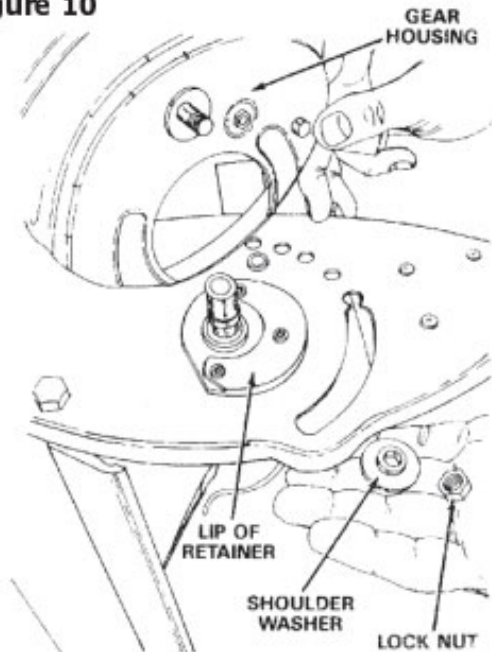
Lubrication

Lubricate the wheels and gears once a season and whenever the reel is sharpened.

Tools required are a standard screwdriver, snap ring pliers, light grease and engine oil, and if rust is present, solvent and crocus cloth.

1. Remove the hub cap using the screwdriver.
2. Remove the e-ring with the screwdriver.
3. Lift off the wheel.
4. Clean rust, if any, from axle, using solvent and crocus cloth.
5. Coat the axle with light grease.
6. Remove the snap ring on the pinion gear, being careful not to lose the ratchet pawl under the pinion gear. It is important to use snap ring pliers in order to prevent damaging the snap ring.
7. Remove the pawl from the reel shaft, noting the exact position it is in. It must be reinstalled in the same position in order to drive the wheel.
8. Apply light grease to the gear teeth on the inside of the wheel Figure 12.
9. Using engine oil, lightly lubricate points indicated in Figures 10 & 11 on roller and between end plates and wheel dust covers. Periodic lubrication on these points will ensure smooth mechanical operation.

Figure 10



Sharpen Blades

Your Silent Cut reel mower features high quality heat-treated reel and bedknife blades that were professionally sharpened before leaving our shop. Signs that the mower needs to be sharpened include:

The mower will start to become more difficult to push.

When properly sharpened and adjusted, the mower will cut the grass with a clean cut straight across the blade. Dull blades will leave a somewhat ragged cut.

Small dings or light rust on the blades can be removed with sharpening

Always backlap the blades, never use a file.

Gear Housing Assembly

The gear housing must be properly assembled in order to prevent loose wheels, which will result in early failure of the pinion gears and wheels. When replacing the gear housing after it is removed for service, be sure that it fits UNDER the lip of the retainer. The shoulder on the shoulder washer must fit into the slot on the end plate. Tighten the lock nut.

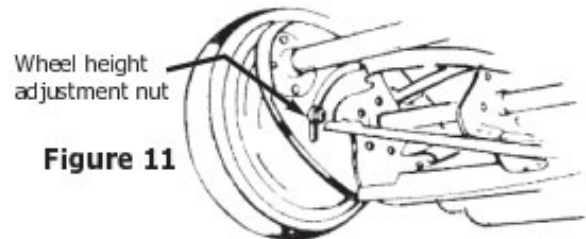


Figure 11

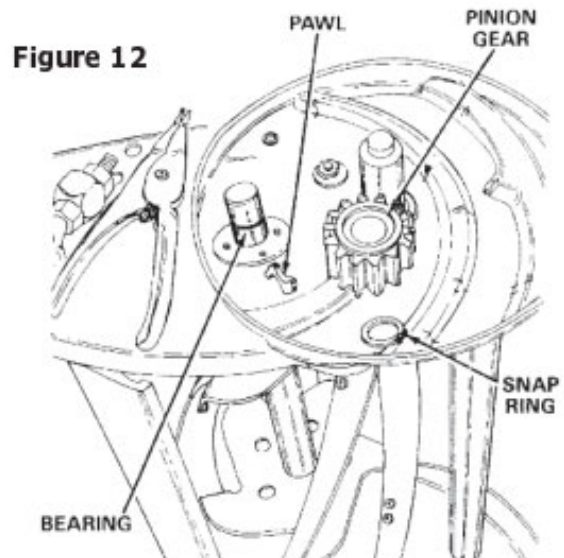


Figure 12

MAINTENANCE AND WARRANTY INFORMATION

- **Maximum** speed in smooth conditions should not exceed a brisk walk or 4 miles per hour. In rough conditions slow down more. Bouncing reels will not give the desired cut.
- Loss of parts due to loose bolts is not covered by warranty.
- Check all bolts for tightness regularly; especially the axle and roller bracket bolts.
- Wing bolts need to be kept tight to prevent hole wear. Wings need to be able to flex with the terrain. Oil pivot points of wings.
- Lubricate reels regularly with a light oil such as WD-40 after each use to prevent any rust from forming on cutting surfaces.
- For problems or questions call ProMow toll-free: 1-877-477-6669.
- ***Refer to owner's manual for more information on warranty and maintenance.***

PROMOW MOWING TIPS

- **THIS IS A FINISH CUT MOWER ONLY.** IT IS NOT INTENDED TO CUT WEEDS OR VERY TALL GRASS.
- FOR BEST RESULTS WHEN MOWING, DO NOT CUT OFF MORE THAN 1"-2" OF GRASS DURING EACH MOWING.
- IF YOU ALLOW YOUR GRASS TO GROW TO A TALLER LENGTH, MOWING TWICE WILL RESULT IN THE SMOOTHEST CUT.
- EACH TIME YOU MOW, MOW AT A DIFFERENT ANGLE. CROSS MOWING WILL RESULT IN THE SMOOTHEST CUT.
- CHECK CUTTER BARS EVERY 2-3 MOWINGS. TO KNOW THE BARS ARE ADJUSTED, REELS WILL JUST TOUCH THE CUTTER BAR MAKING A LIGHT WHISPING NOISE AND SHOULD CUT PAPER ACROSS THE ENTIRE CUTTER BAR. TO ADJUST CUTTER BARS REFER TO "MAINTENANCE AND ADJUSTMENT" PAGE.
- IF YOU NOTICE WHEEL MARKS FROM TRACTOR, YOU ARE WAITING TOO LONG BETWEEN MOWINGS OR YOUR GRASS MAY BE TOO WET.
- TO HELP ON RUST & WEAR, SPRAY W-D 40, OR SIMILAR LUBRICANT ON THE CUTTER BAR AFTER EACH MOWING.
- ALWAYS STORE IN A DRY PLACE.
- AFTER CONSIDERABLE USE YOUR PROMOW UNIT MAY NEED TO BE SHARPENED. THIS CAN BE DONE AT HOME WITH A PROMOW SHARPENING KIT OR THROUGH YOUR LOCAL SHARPENING SHOP.

CUSTOMER RESPONSIBILITIES

- READ AND FAMILIARIZE YOURSELF WITH ALL INSTRUCTIONS AND USEAGE HINTS IN THIS MANUAL.
- INSPECT YOUR MOWING AREA FOR ANY DEBRIS OR OBJECTS THAT COULD CAUSE PROBLEMS AND REMOVE PRIOR TO MOWING.
- MAKE SURE YOUR MOWER IS IN SAFE OPERATING CONDITION. DO NOT ATTEMPT TO OPERATE IF YOU HAVE ANY DAMAGE' REPAIR IT FIRST.
- **TRAVEL AT A SAFE SPEED. EXCESSIVE SPEED IS UNSAFE AND MAY CAUSE DAMAGE TO THE UNIT.
- DO NOT MOW NEAR SMALL CHILDREN OR OTHER PEOPLE.
- PERIODICALLY CHECK YOUR UNIT FOR DAMAGE AND MAKE SURE ALL NUTS AND BOLTS ARE TIGHT.
- ALWAYS EXERCISE CARE WHEN OPERATING YOUR MOWER, AVOID STRIKING OR RUNNING INTO OR OVER SOLID OBJECTS OR DEBRIS.

CARE

- KEEP YOUR MOWER CLEAN AND REGULARLY LUBRICATE BLADES WITH WD-40 OR SIMILAR LUBRICANT. RECOMMENDED AFTER EACH MOWING.
- CHECK ALL BOLTS AND NUTS TO BE SURE THEY ARE PROPERLY SECURED.
- STORE IN A CLEAN DRY AREA.
- DO NOT TRAVEL WITH THE WINGS IN UPRIGHT POSITION. DAMAGE TO THE FRAME OR MOWER HEADS CAN RESULT.
- IF YOU HAVE ANY QUESTIONS OR PROBLEMS CALL PROMOW TOLL-FREE: 1-877-477-6669.

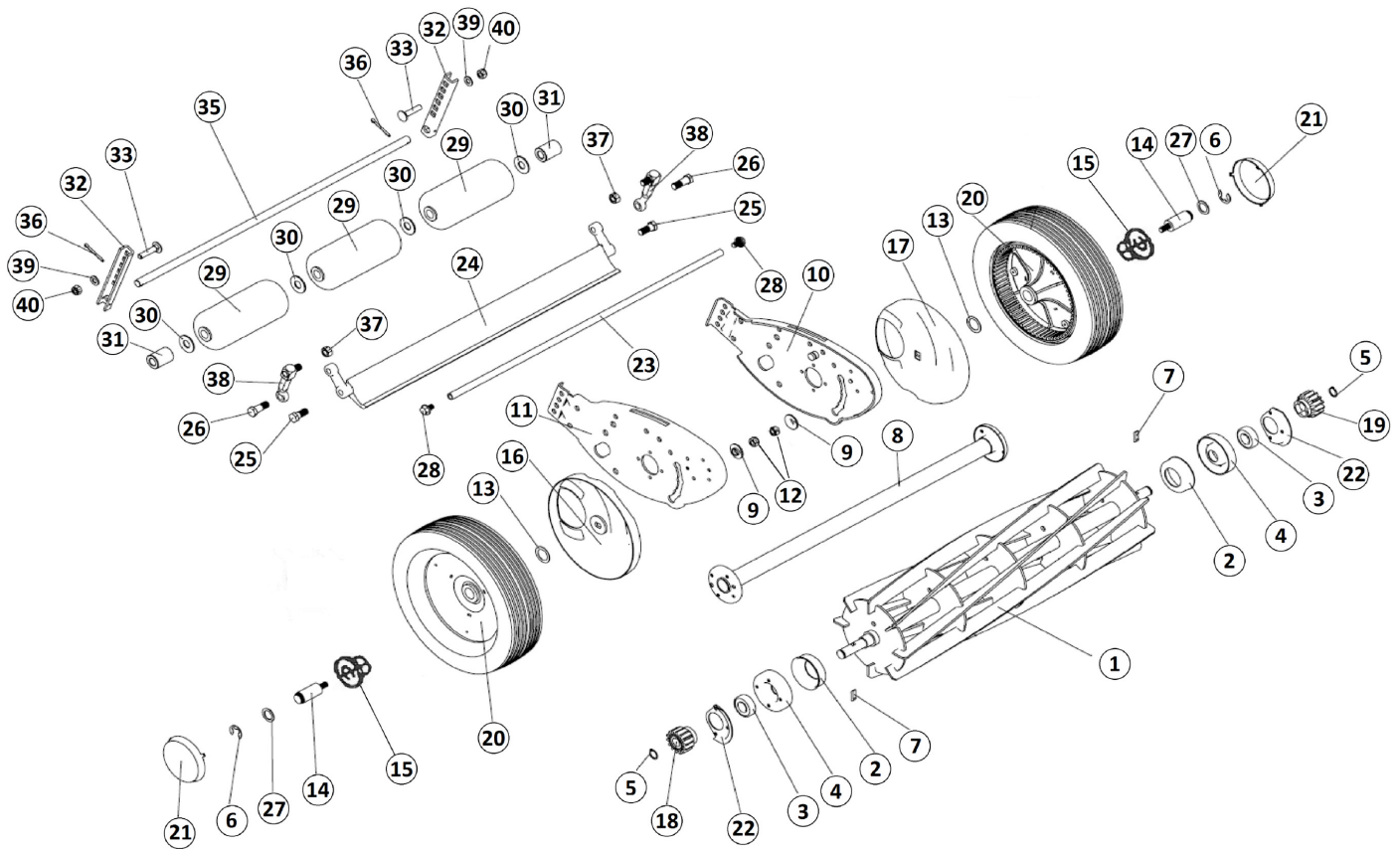
WARRANTY

SEE "WARRANTY REGISTRATION - NEW EQUIPMENT LIMITED WARRANTY" IN THIS MANUAL. WARRANTY WILL NOT BE EFFECTIVE UNLESS REGISTERED BY COMPLETING FORM AND MAILING TO PROMOW.

****CAUTION: A brisk walk, about 4 MPH, should be considered top speed. Reduce speed down from 4 MPH on rough terrain. Speeds that exceed 4 MPH on smooth turf will cause premature wearing of the bearings and possible damage to the reel itself.**

EVIDENCE OF EXCESSIVE SPEED WILL VOID WARRANTY

Problems or Questions? Call ProMow Toll-Free: 1-877-477-6669



Premium GOLD 21" REEL PARTS LISTING

REF	PART NO.	QTY	DESCRIPTION	REF	PART NO.	QTY	DESCRIPTION
1	6250-201910	1	21" Reel Assembly	21	6017-201901	2	Hub Cap
2	6150-201901	2	Dust Cover	22	6043-201901	2	Bearing Retainer
3	6155-201901	2	Reel Bearing	23	6239-201920	1	Rear Spacer
4	6078-201901	2	Shaft Trap	24	6250-201920	1	Cutter Bar Assembly
5	6131-201901	2	Pinion Retaining Ring	25	6214-201901	2	Short Taper Bolt
6	6CB-13	2	Axle Retaining Ring	26	6214-201920	2	Long Taper Bolt
7	6115-201901	2	Pawl	27	6FW-16	2	Axle Washer
8	6239-201901	1	Torsion Tube	28	M12-125	2	Vib Bolt
9	6014-201910	2	Step Bushing	29	6137-201902	3	Roller
10	6004-201912	1	Side Plate RH	30	6014-201903	4	Washer
11	6004-201911	1	Side Plate LH	31	6124-201901	2	Roller Axle Spacer
12	6236-201915	2	Nut M8-1.25 LN	32	6021-201001	2	Roller Bracket
13	6014-201901	2	Washer	33	CBM835	2	Carriage Bolt
14	6111-201910	2	Axle	34	H516NYNFN	2	Nut
15	6124-201902	4	Wheel Bushing	35	6111-201902	1	Roller Shaft
16	6017-201520	1	Gear Housing RH	36	6115-201902	2	Cotter Pin
17	6017-201521	1	Gear Housing LH	37	6236-201910	2	Nut M10-1.00 LN
18	6073-201901L	1	Pinion Gear LH	38	6191-201902	2	Adjustment Assem.
19	6073-201901R	1	Pinion Gear RH	39	6FW-M8	2	Washer
20	6137-201901	2	Wheel Assembly 21"	40	6236-201915	2	Nut M8-1.25 LN

OIL REELS AFTER EACH USE TO PREVENT RUST AND TO LUBRICATE CUTTING BLADES. USE LIGHT OIL, SUCH AS WD-40