

Pro Series Operators Manual



Call ProMow for ALL Service Needs
Toll Free: 1-877-477-6669



Dear Valued Customer....

Let me take this opportunity to congratulate you on your purchase of a ProMow Reel Mower System. You have purchased perhaps the most revolutionary new product since the Weed Eater! No other product exists that will allow you to mow your yard in 1/3 of the time and give you professionally manicured results all for a fraction of the cost of any alternative.

When used as directed, your ProMow unit will leave your yard looking healthy and lush. After all, the most qualified greens keepers in the world use ganged reel mowers to manicure their golf courses to "green carpet" perfection!

I recommend that you spend a few minutes and read the mowing tips and the troubleshooting guide found in the following pages. I believe these tips will make your ProMow experience much more satisfying and give you optimum performance with your new ProMow unit.

Also, please take a minute and complete the warranty page found in your packet. You may also complete the registration of your mower online, just link to our web site: <http://warranty.promow.com>. We will need this information should you ever need warranty service and to notify you of changes, upgrades, or possible recall conditions. This information will not be sold or used by anyone other than ProMow, Inc.

Once again, we appreciate your business and hope you experience all the benefits a ProMow mower can bring to you.

Sincerely,

Douglas J. Short
CEO
ProMow, Inc.

MAINTENANCE AND WARRANTY INFORMATION

Loss of parts due to lose bolts are not covered by warranty.

Check all bolts for tightness regularly; especially the axle and roller bracket bolts

Wing bolts need to be kept tight to prevent hole wear. Wings need to be able to flex with the terrain.

Lubricate reels regularly with a light oil, such as WD-40.

For all your service needs calls toll-free 1-877-477-6669.

Front Wing (Long)

← Rear Wing (Short)

Attatch wing to frame
tighten bolt secure
snug as possible that
allows wing to flex with
weight of reel. Oil Connection

Keep wing bolts tight to avoid
hole wear and mower tracking true

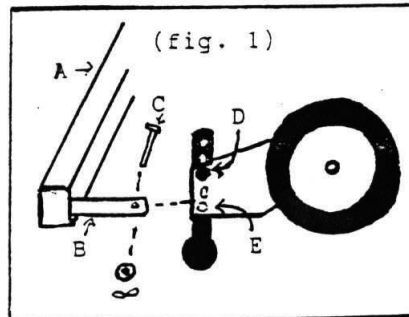
(G) Attatch to Power Unit

Tongue top surface should be
nearly level when attached to
power unit

(G)

Attatch reel to frame (fig. 1)
Pin (C) through hole (E) through tab (B)
Install washer on pin and secure with lock
through hole in pin

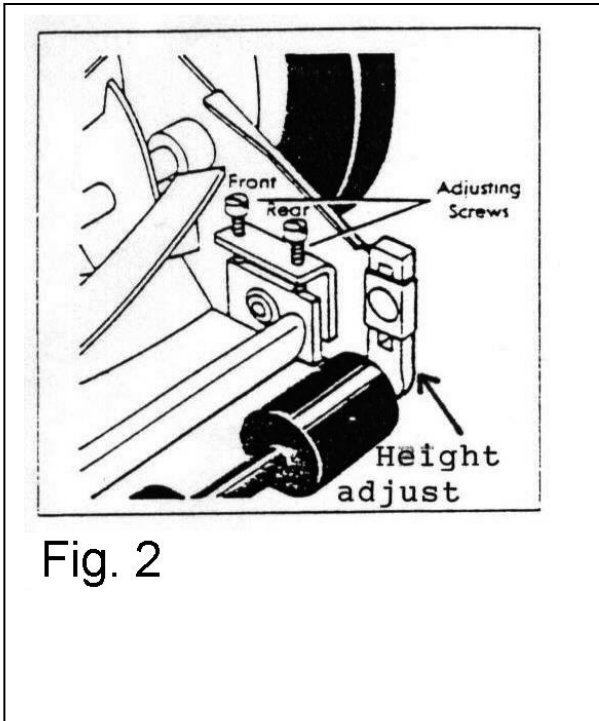
Cutting height determined with (D) (fig 1)



- A Frame
- B Tab
- C Pin
- D Height adjust bolt
- E Bottom hole
- G Tongue

Mower Heads Usage and Care

Blade Adjustment



- Blades are adjusted before leaving factory for proper cut. Normally no further adjustment is required.
- Misalignment can occur during shipping or after prolonged use, resulting in a rough or uneven cut.
- All adjustments should be made from the rear of the mower as show.
- Cutting action is adjusted through use of adjusting screws that pivot the cutter bar similar to a teeter-totter.
- Each side can be adjusted separately. The front screws (when tightened) loosen up the cutting action by forcing the cutter bar away from the reel. The rear adjustment screw (when tightened) tightens the cutting action by forcing the cutter bar towards the reel blade.
- Refer to Fig. 2
- Adjusting the screws is a precise procedure. 1/16 of a turn is considered a major adjustment. Work in small adjustments.
- Major changes in adjustment may require loosening the opposing screw (front or back) an equal amount.
- **Height Adjustment** – Raise or lower roller brackets left and right side to desired height refer to Fig. 2

LOOSENING THE BLADES

- Condition: Reel will not turn freely; Blades should make contact and have a clean whisping sound when set properly.
- Oil blades with WD-40 or similar oil. Blades may be rusted.
- If still to tight, move cutter bar away from reel blades slightly.
- Loosen one or both back screws (depending on area binding) slightly by turning them counter-clockwise.
- Tighten one or both front screws slightly to push cutter bar down and away.

TIGHTENING BLADES

- Condition: Mower is not cutting grass properly; the reel and cutter bar are not making contact.
- The cutter bar must be moved close to the reel to regain proper contact adjustment.
- Loosen one or both front screws slightly by turning them counter-clockwise.
- Tighten one or both rear screws correspondingly by running them clockwise a small amount at a time until proper contact is made.

PROMOW MOWING TIPS

- THIS IS A FINISH CUT MOWER ONLY. IT IS NOT INTENDED TO CUT WEEDS OR VERY TALL GRASS.
- FOR BEST RESULTS WHEN MOWING, DO NOT CUT OFF MORE THAN 1"-2" OF GRASS DURING EACH MOWING.
- IF YOU ALLOW YOUR GRASS TO GROW TO A TALLER LENGTH, MOWING TWICE WILL RESULT IN THE SMOOTHEST CUT.
- EACH TIME YOU MOW, MOW AT A DIFFERENT ANGLE. CROSS MOWING WILL RESULT IN THE SMOOTHEST CUT.
- CHECK CUTTER BARS EVERY 2-3 MOWINGS. TO KNOW THE BARS ARE ADJUSTED, REELS WILL JUST TOUCH THE CUTTER BAR MAKING A LIGHT WHISPING NOISE AND SHOULD CUT PAPER ACROSS THE ENTIRE CUTTER BAR. TO ADJUST CUTTER BARS REFER TO THE MAINTENANCE AND ADJUSTMENT PAGE.
- IF YOU NOTICE WHEEL MARKS FROM TRACTOR, YOU ARE WAITING TOO LONG BETWEEN MOWINGS OR YOUR GRASS MAY BE TOO WET.
- TO HELP ON RUST & WEAR, SPRAY W-D 40, OR SIMILAR LUBRICANT ON THE CUTTER BAR AFTER EACH MOWING.
- ALWAYS STORE IN A DRY PLACE.
- AFTER CONSIDERABLE USE YOUR PROMOW UNIT MAY NEED TO BE SHARPENED. THIS CAN BE DONE AT HOME WITH A PROMOW SHARPENING KIT OR THROUGH YOUR LOCAL SHARPENING SHOP.

CUSTOMER RESPONSIBILITIES

- READ AND FAMILIARIZE YOURSELF WITH ALL INSTRUCTIONS AND USEAGE HINTS IN THIS MANUAL.
- INSPECT YOUR MOWING AREA FOR ANY DEBRIS OR OBJECTS THAT COULD CAUSE PROBLEMS AND REMOVE PRIOR TO MOWING.
- MAKE SURE YOUR MOWER IS IN SAFE OPERATING CONDITION. DO NOT ATTEMPT TO OPERATE IF YOU HAVE ANY DAMAGE' REPAIR IT FIRST.
- **TRAVEL AT A SAFE SPEED. EXCESSIVE SPEED IS UNSAFE AND MAY CAUSE DAMAGE TO THE UNIT.
- DO NOT MOW NEAR SMALL CHILDREN OR OTHER PEOPLE.
- PERIODICALLY CHECK YOUR UNIT FOR DAMAGE AND MAKE SURE ALL NUTS AND BOLTS ARE TIGHT.
- ALWAYS EXERCISE CARE WHEN OPERATING YOUR MOWER, AVOID STRIKING OR RUNNING INTO OR OVER SOLID OBJECTS OR DEBRIS.

CARE

- KEEP YOUR MOWER CLEAN AND REGULARLY LUBRICATE BLADES WITH WD-40 OR SIMILAR LUBRICANT. RECOMMENDED AFTER EACH MOWING.
- DO NOT STORE OUTSIDE OR USE IN THE RAIN AS RUSTING MAY DEVELOP.
- CHECK ALL BOLTS AND NUTS TO BE SURE THEY ARE PROPERLY SECURED.
- STORE IN A CLEAN DRY AREA.
- DO NOT TRAVEL WITH THE WINGS IN UPRIGHT POSITION. DAMAGE TO THE FRAME OR MOWER HEADS CAN RESULT.
- IF YOU HAVE ANY QUESTIONS OR PROBLEMS CALL PROMOW TOLL-FREE AT 1-877-477-6669.

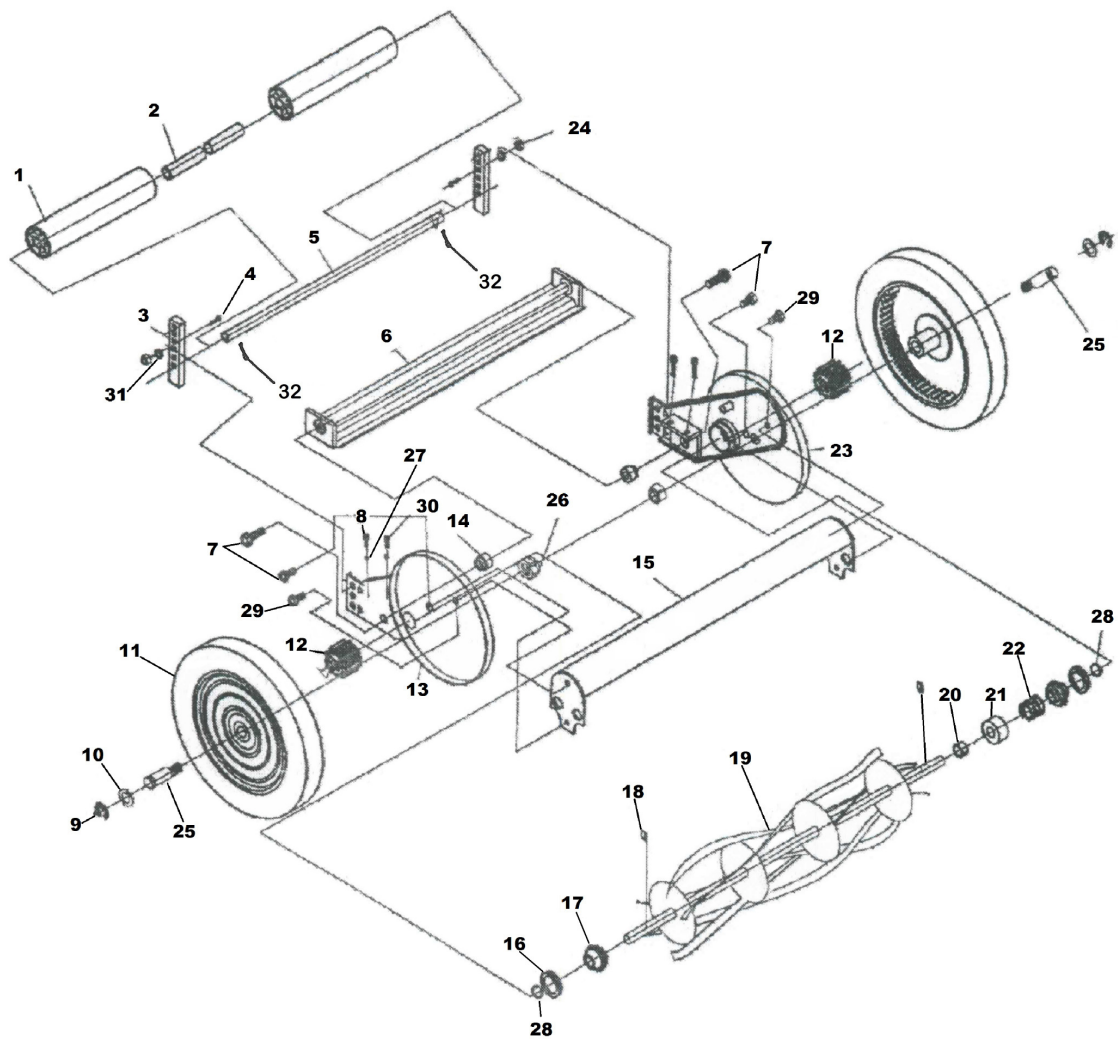
WARRANTY

SEE "WARRANTY REGISTRATION - NEW EQUIPMENT LIMITED WARRANTY" IN THIS MANUAL. WARRANTY WILL NOT BE EFFECTIVE UNLESS REGISTERED BY COMPLETING FORM AND MAILING TO PROMOW.

****CAUTION: A brisk walk, about 4 MPH, should be considered top speed. Reduce speed down from 4 MPH on rough terrain. Speeds that exceed 4 MPH on smooth turf will cause premature wearing of the bearings and possible damage to the reel itself.**

EVIDENCE OF EXCESSIVE SPEED WILL VOID WARRANTY

Problems or Questions? Call ProMow Toll-Free: 1-877-477-6669



18" REEL MOWER PARTS LISTING

REF NO	PART NO	DESCRIPTION	QTY	REF NO	PART NO	DESCRIPTION	QTY
1	6122-201209	ROLLER	2	17	6130-201001	BEARING CONE	2
2	6059-201201	ROLLER SPACER	2	18	6115-201001	PAWL	2
3	6021-201001	ROLLER BRACKET	2	19	6250-201206	REEL ASSEMBLY	1
4	6000CB-M8-35	BOLT	2	20	6131-201001	SPACER	1
5	6111-201205	ROLLER SHAFT	1	21	6198-201005	DUST CUP	1
6	6250-201205	CUTTER BAR	1	22	6024-201001	SPRING	1
7	6000-3/8-30	COVER BOLT	4	23	6004-201202	SIDE PLATE - R	1
8	6000CS-5/16-30	ADJUSTING SCREW	2	24	6NY-M8	LOCK NUT	2
9	6CB-13	E' CLIP	2	25	6111-201204	WHEEL AXLE	2
10	6FW-16	AXLE WASHER	2	26	6NY-3/8	LOCK NUT	2
11	6122-201250	PLASTIC WHEEL	2	27	6N-5/16	NUT	4
12	6073-201250	PINION GEAR	2	28	6014-201001	WASHER	2
13	6004-201250	SIDE PLATE - L	1	29	6000-5/16-15	COVER BOLT	4
14	6059-201002	CUTTER BAR STUD	2	30	6000CS-5/16-25	ADJUSTING SCREW	2
15	6017-201201	FRONT COVER	1	31	6FW-M8	WASHER	4
16	6155-201001	BEARING	2	32	6115-201905	COTTER PIN	2